



DESIGNER  
Marcel Sigel

COVE  
SEATING COLLECTION

A versatile range of armchairs, lounges and ottomans, designed and made in Melbourne, Australia.

Thoughtfully crafted for both residential and commercial settings, Cove reflects gohome's enduring design ethos: innovative, honest, and timeless.

With a fixed backrest cushion, Cove boasts superior lumbar support.

#### UPHOLSTERY:

House fabrics for the Cove Armchairs by Maharam - Arlo and Meld ranges.

Armchairs can also be upholstered with custom fabrics.

#### LEATHER OPTIONS:

House leathers for the Cove Armchairs by Pelle Leather - Panorama range.

Lounges can also be upholstered with custom leathers.

#### OPTIONS:

In leg recessed USB / GPO charging modules, privacy screens, and single / connecting side tables available.

Swivel and 360° return bases available.

# COVE

## ARMCHAIR



Single Seater Cove Armchair in Fabric



Single Seater Cove Armchair in Leather



Single Seater Cove Armchair with screen



# COVE

## 2.5 SEATER AND 3 SEATER LOUNGES



Cove 2.5 Seater Lounge in Maharam Meld



Cove 3 Seater in Maharam Meld



Cove 2.5 Seater with highback screen



### UPHOLSTERY:

House fabrics for the Lounges by Maharam - Meld and Arlo ranges

Lounges can also be upholstered with custom fabrics.

### LEATHER OPTIONS:

House leathers for the Cove Lounges by Pelle Leather - Panorama range.

Lounges can also be upholstered with custom leathers.

### OPTIONS:

In leg recessed USB / GPO charging modules, privacy screens, and single / connecting side tables available.

Upgrade the Cove Armchair and Lounges with high-back screens for privacy, comfort and secluded concentration.

Perfect for working independently or taking a call, Cove becomes an oasis for comfort.





# COVE

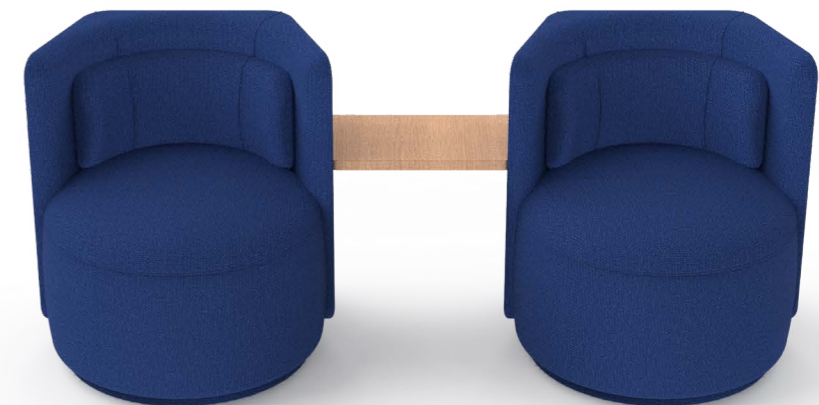
SIDE TABLE VARIATIONS



Cove Armchair with Single Side Table



Cove Armchairs with Circle Tables



Cove Armchairs with Double Table



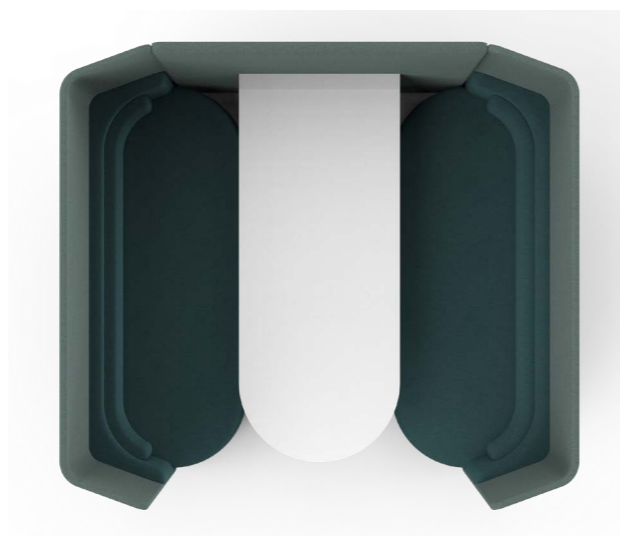
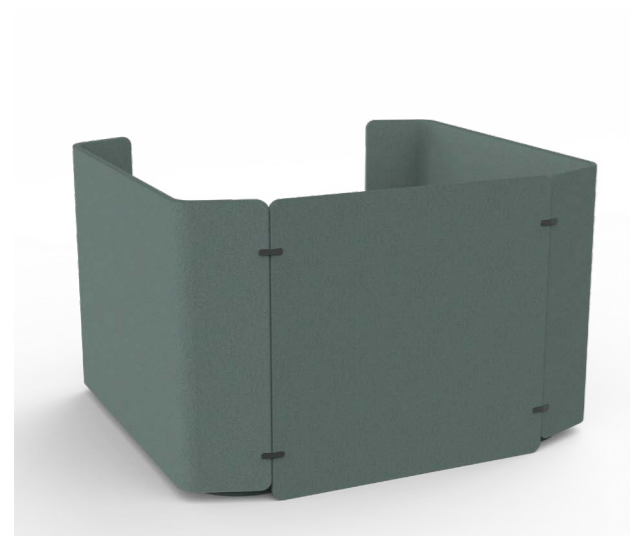
Cove Armchairs with Alternating Table

# COVE

## MEETING BOOTH



Cove 2.5 Seater Meeting Booth with Integrated Table



### UPHOLSTERY:

House fabrics for the Cove Meeting Booths by Maharam.

Booths can also be upholstered with custom fabrics.

### LEATHER OPTIONS:

House leathers for the Cove Low Lounges and Ottomans by Pelle Leather - Panorama range.

Lounges can also be upholstered with custom leathers.

### OPTIONS:

TV screen with hidden cables, ground fixing, various table finishes, seat-integrated power charging modules.

Made to order in 6-8 weeks

Cove Meeting Booths are flat-packed for transport efficiency.

Composed of 2.5 Seater Cove Lounges with screen heights up to 1300mm, the Booth provides a secluded space for productivity, collaboration and comfort.



The Cove Low Lounge boosts generous seat dimensions and a loose cushion for relaxed comfort.

Paired with the matching Cove Ottoman for a cohesive style, the Low Lounge is the ultimate spot to relax.

**UPHOLSTERY:**

House fabrics for the Cove Low Lounges and Ottomans by Maharam and Instyle. Lounges can also be upholstered with custom fabrics.

**LEATHER OPTIONS:**

House leathers for the Cove Low Lounges and Ottomans by Pelle Leather - Panorama range. Lounges can also be upholstered with custom leathers.

**OPTIONS:**

In leg recessed USB / GPO charging modules, privacy screens, and single / connecting side tables available.

Swivel and 360° return bases available.

# COVE

LOW LOUNGE AND OTTOMAN



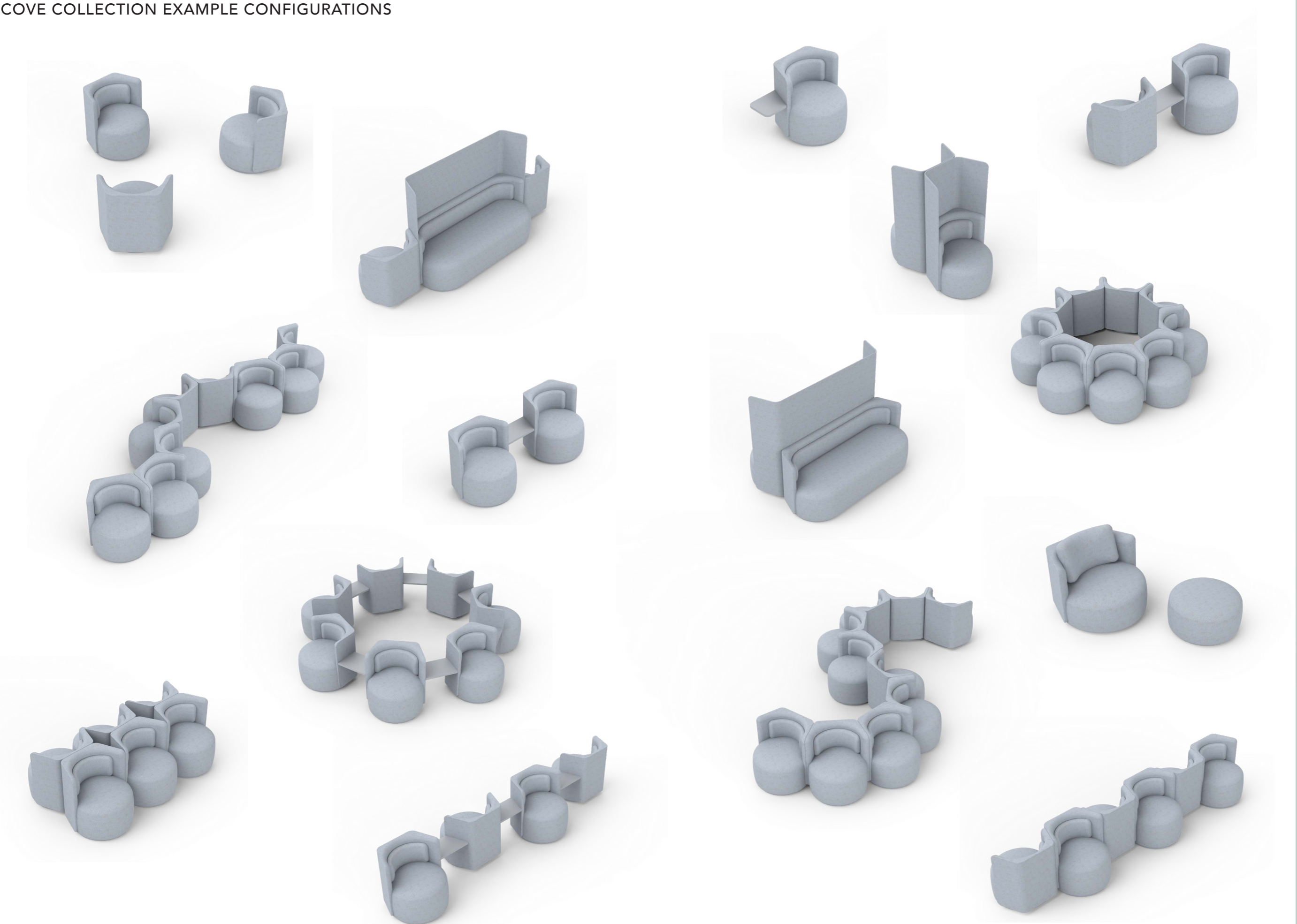
Cove Low Lounge in Maharam Hearth



Cove Ottoman in Maharam Hearth



COVE COLLECTION EXAMPLE CONFIGURATIONS

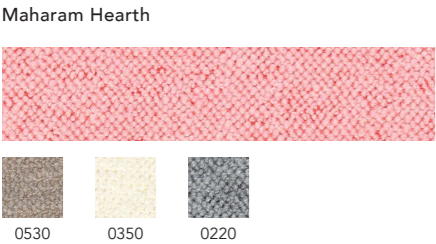
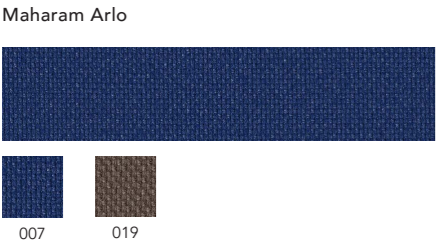
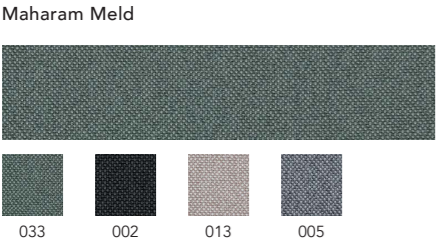


COVE COLLECTION - PRODUCT SPECIFICATIONS

DESIGNER: Marcel Sigel

MATERIAL AND FINISH  
Eco-Foams.  
Eco-webbing.  
E010 MDF & FSC Plywood Frames

FABRIC OPTIONS  
Available in customer's own fabric or  
house fabrics for the Cove collection by  
Maharam and Instyle.

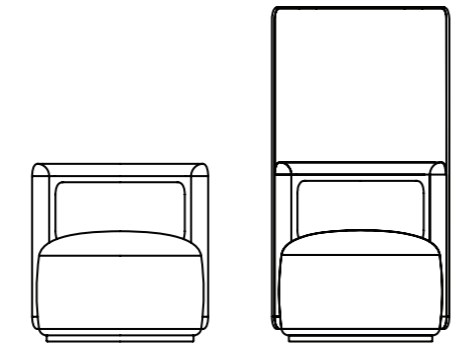


LEATHER OPTIONS  
Available in customer's own leather or  
house leathers by Pelle Leather, from their  
Panorama range in 3 colours.  
Blackswan | Buttermilk | Tribal

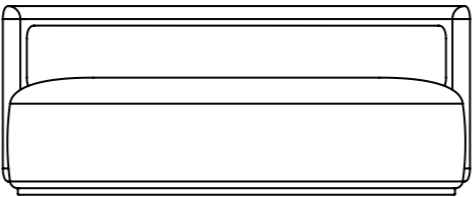


WARRANTY  
5 years.

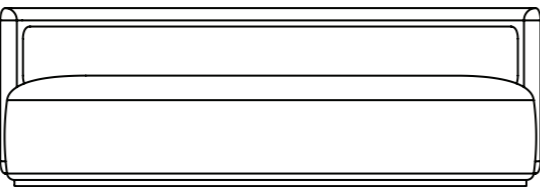
DIMENSIONS



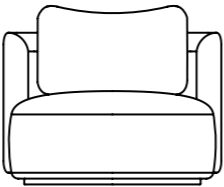
Armchair  
695mmW x 660mmD x 725mmH  
Seat height: 450mm  
With Screen: 765mmW x 695mmD x 1300mmH



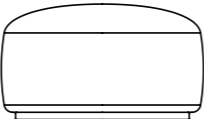
2..5 Seater Lounge  
1795mmW x 660mmD x 725mmH\*  
Seat height: 450mm  
With Screen: 1865mmW x 695mmD x 1300mmH



3 Seater Lounge  
2195mmW x 660mmD x 725mmH\*  
Seat height: 450mm  
With Screen: 2265mmW x 695mmD x 1300mmH



Low Lounge  
930mmW x 885mmD x 647mmH\*  
Seat height: 397mm  
\*excludes loose cushion



Ottoman  
700mmW x 700mmD x 397mmH

COVE COLLECTION - ACCESSORY SPECIFICATIONS

DESIGNER: Marcel Sigel

TABLE MATERIAL AND FINISH OPTIONS  
25mm Laminex black or white on MDF with  
matching ABS edge



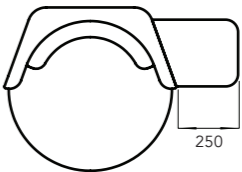
25mm American Oak veneer crown cut  
edge on MDF with ply ABS edge. Options  
for timber finish:  
Natural Oak | Black stained Oak | Walnut



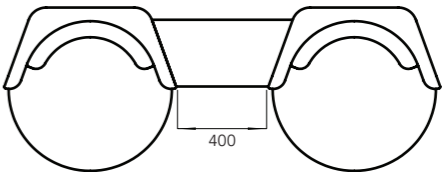
MEETING BOOTH:  
Table leg and base constructed from steel.  
Joining plates constructed from mild steel.

WARRANTY  
5 years.

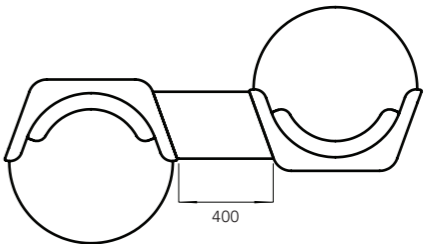
DIMENSIONS



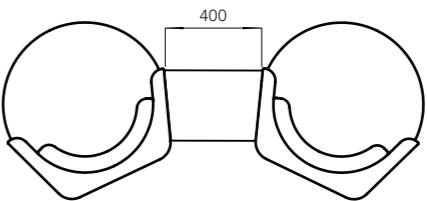
Single Side Table



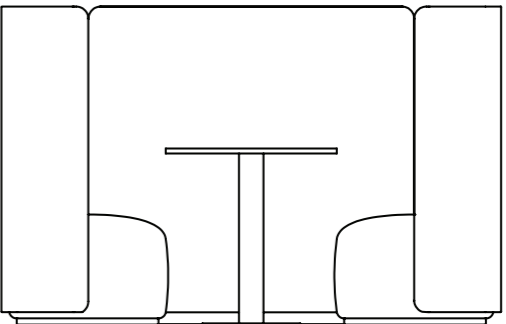
Double Table



Alternating Table



7-Piece Circle Table  
Full circle external diameter: 3050mm



Meeting Booth  
2040mmW x 1840mmD x 1300mmH\*  
\*Height can be customised up to 1300mm  
Table Height: 720mm  
Table Width: 700mm  
Seat Height: 450mm