

LINTEX / AIR Textile



AIR TEXTILE

A textile noticeboard designed to complement the Air whiteboard and Air spaces. The modules can be mounted either side of the Air whiteboard or in between Air Spaces. Available in Blazer Lite, Remix Screen, Cura Screen or natural linen.

Concealed fittings
 Depth from wall 16 mm
 Price group Linen
 Price group B: Blazer Lite, Cura Screen
 Price group C: Remix Screen
 Complements Air whiteboard & Air Spaces

Article number	Name	Size w x h mm	Weight kg
20310MA-textile	AIR Textile	290 x 1190	2
20320MA-textile	AIR Textile	290 x 1990	3
20330MA-textile	AIR Textile	290 x 2490	4
20340MA-textile	AIR Textile	290 x 2990	4
20610MA-textile	AIR Textile	590 x 1190	3
20620MA-textile	AIR Textile	590 x 1990	6
20630MA-textile	AIR Textile	590 x 2490	7
20640MA-textile	AIR Textile	590 x 2990	8
20810MA-textile	AIR Textile	1190 x 1190	7
20820MA-textile	AIR Textile	1190 x 1990	11
20830MA-textile	AIR Textile	1190 x 2490	14
20840MA-textile	AIR Textile	1190 x 2990	16

Colour chart on page 92

CAMIRA - BLAZER LITE



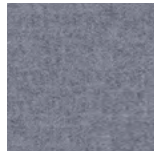
Retreat LTH39



Cuddle LTH62



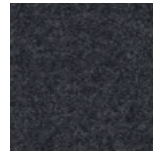
Balance LTH41



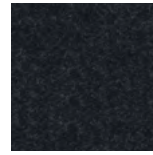
True LTH61



Harmony LTH63



Solace LTH70



Haven LTH40



Happy LTH55



Pillow LTH43



Devoted LTH58



Graceful LTH51



Angel LTH49

BLAZER LITE, NON STOCK COLOURS



Shelter - LTH60



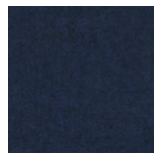
Hush - LTH42



Freedom - LTH69



Dainty - LTH64



Mood - LTH44



Worship - LTH59



Pastel - LTH65



Tender - LTH53



Daydream - LTH46



Verity - LTH57



Faith - LTH68



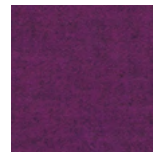
Love - LTH47



Bliss - LTH48



Wish - LTH67



Pamper - LTH66



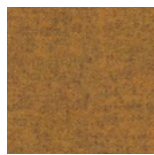
Aspire - LTH52



Hope - LTH50



Praise - LTH54



Buddah - LTH56