

Case High Back

Assembly instructions

WENDELBO

Please note

Please read these instructions carefully and keep them for future reference. Refer to the parts inventory and ensure you have all the parts before starting. During assembly, place all parts on a flat, soft and clean surface, such as a carpet or blanket, to prevent scratches and damage. We recommend that a minimum of two people help each other to assemble.

Parts inventory

A Seat frame



B Left side



C Right side



D Bolts



E Washers



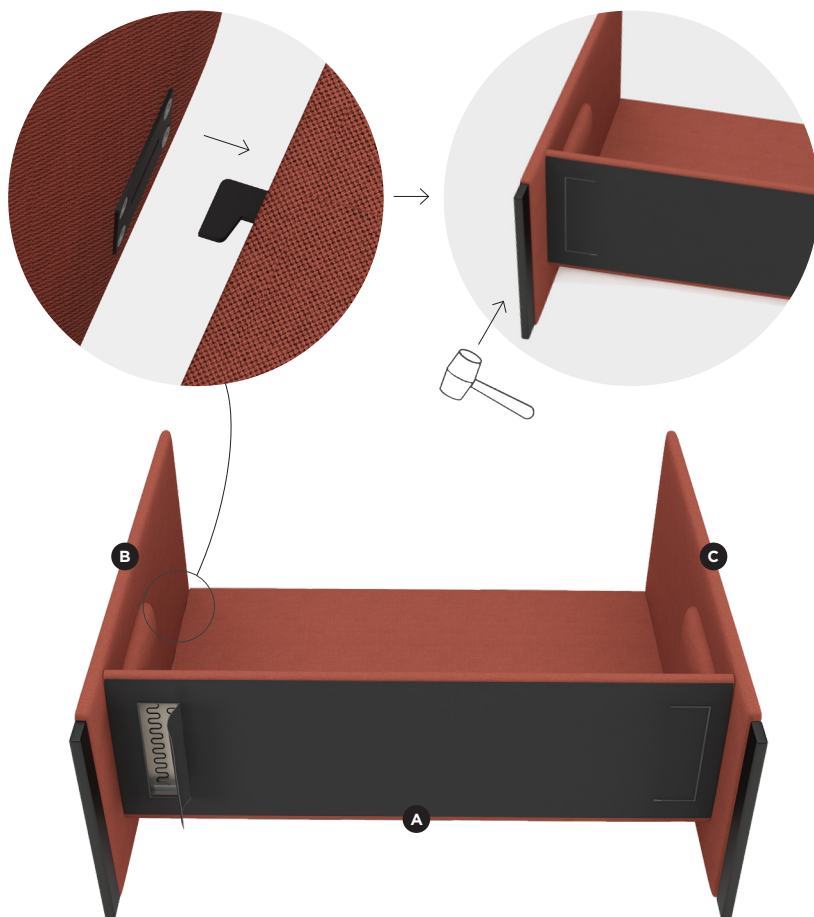
F Spanner



Assembly

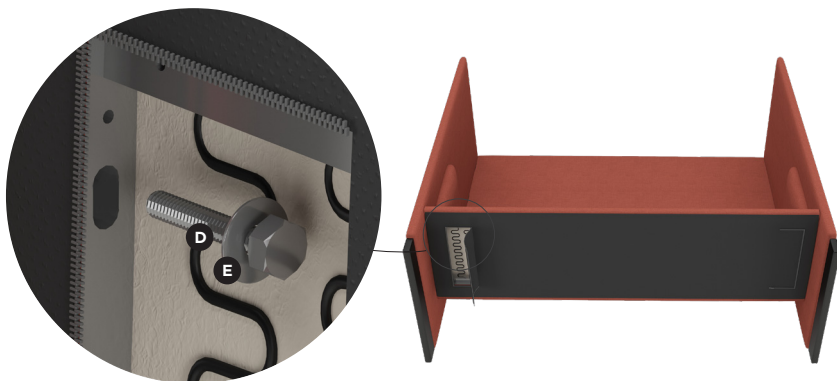
1.

Position the seat frame (A) on its back on the floor, ensuring it is elevated by approximately 2-3 cm from the ground. Align the hooks on the seat frame with the holes in the metal bracket on the left side (B) and press them together. Once the hooks are inserted, use a rubber mallet to gently tap the base, locking the side in place. Ensure the top of the side is level with the top of the back. Repeat this process for the right side (C).



2.

Open the zipper on the underside of the seat frame and use a spanner (F) to attach two bolts (D) on each side. Tighten them securely, then close the zipper.



3.

Place the sofa on its legs and position the seat and back cushions in place.





WENDELBO